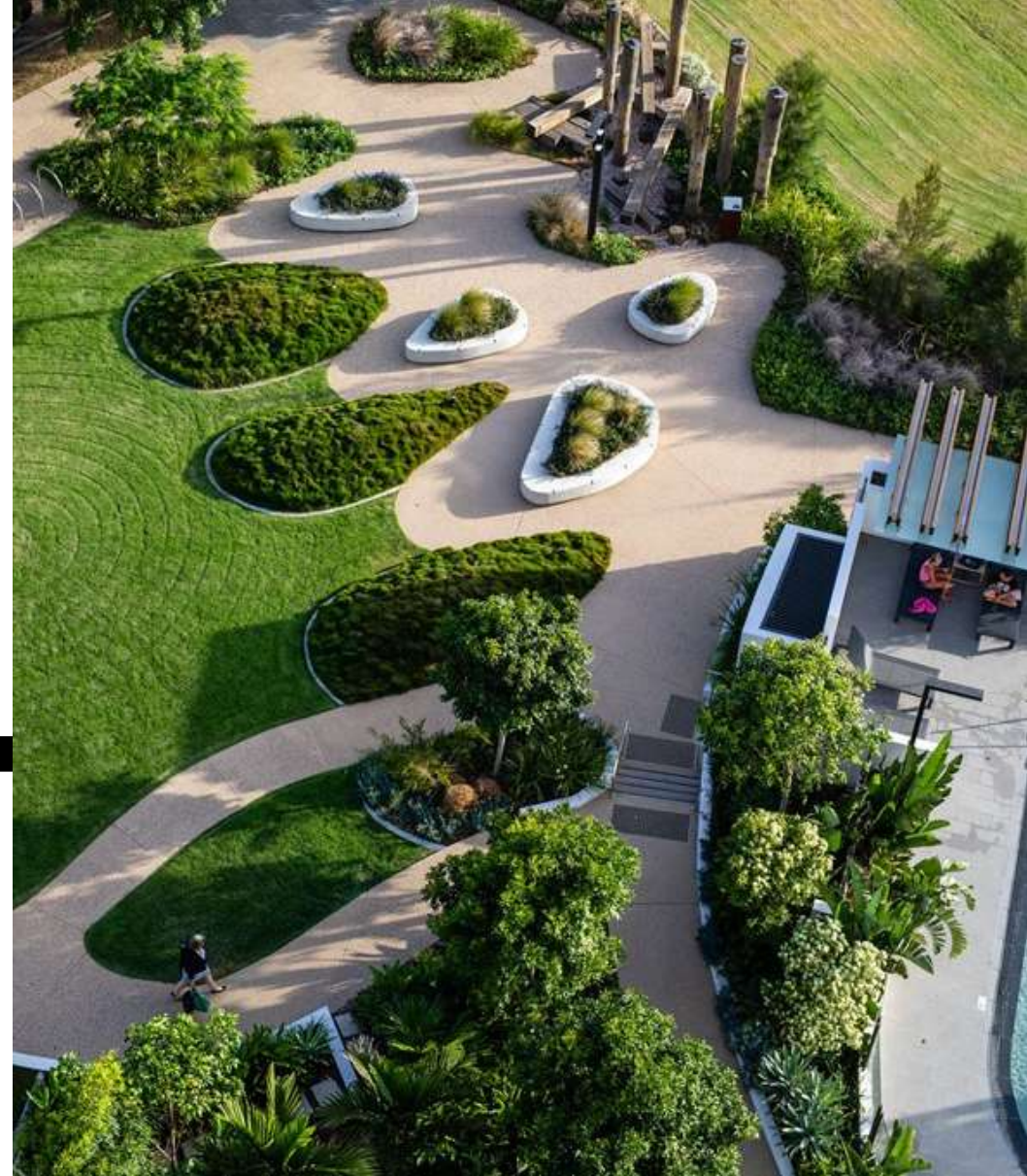


CAPABILITY STATEMENT

BLAND 2 BRILLIANT LANDSCAPES





HOTA ART GALLERY

- | | | | |
|----|-----------------------|----|--|
| 01 | INTRODUCTION | 09 | COMMONWEALTH GAMES VILLAGE |
| 02 | KINGSFORD SMITH DRIVE | 10 | BRISBANE INTERNATIONAL CRUISE TERMINAL |
| 03 | HOME OF THE ARTS | 11 | ADELAIDE RIVERWALK BRIDGE |
| 04 | RIVERLIGHT HAMILTON | 12 | THE HAMILTON, REMORA ROAD |
| 05 | 480 QUEEN STREET | 13 | QUEENSLAND UNIVERSITY OF TECHNOLOGY |
| 06 | FISH LANE TOWN SQUARE | 14 | RYDGES, GOLD COAST AIRPORT HOTEL |
| 07 | THE STAR CASINO | 15 | THE BOATYARD |
| 08 | BREEZE APARTMENTS | 16 | ANZAC SQUARE |



BLAND 2 BRILLIANT LANDSCAPES

Bland 2 Brilliant Landscapes has the capability to construct and deliver on time, all elements within a large commercial landscape setting. From incorporating our own design team and engineers to take a concept drawing, through to construction.

Our experienced team have completed many diverse projects, including;

- **Gold Coast Light Rail** (McDow) \$7.5 million
- **Parklands Commonwealth Games Village** (Grocon) \$5.5 million
- **Kingsford Smith Drive** (Lendlease) \$4.2 million
- **480 Queens Street, Brisbane** (Grocon) \$3.8 million
- **Herston Quarter** (Hutchinson Builders) \$3 million
- **The Hamilton Remora Rd, Brisbane** (Shayer Group) \$2.8 million
- **QUT Garden Point Campus** (Leightons) \$2.6 million
- **Cruise Ship Terminal** (Hindmarsh) \$2.2 million
- **443 Queen Street** (Probuild) \$2.1 million (ongoing)
- **HOTA** (Hansen Yuncken) \$1.9 million
- **Adelaide Riverwalk Bridge** (McConnell Dowell) \$1.8 million
- **King George Square** (Kane Constructions) \$1.2 million
- **Sunshine Plaza** (Lendlease) \$1.1million
- **China Town Mall** (ADCO) \$1.1 million
- **Brisbane Racing Club, Eagle Farm** (BRC) \$1.1 million
- **Anzac Square, Brisbane** (Kane Constructions) \$906,000
- **Liberte Apartment** (Pradella) \$750,000
- **Townsville Mall Redevelopment** (Watpac) \$750,000
- **Riverlight Hamilton** (Watpac) \$725,000
- **Gold Coast Aquatic Centre** (Watpac) \$700,000
- **Bernborough** (LendLease) \$581,000
- **Pinnacle Apartments** (Hutchinson Builders) \$650,000
- **Westfield, North Lakes** (Scentre Group) \$650,000
- **Gold Coast Airport Redevelopment** (ADCO) \$600,000
- **Inner City North State School** (Hutchinson Builders) \$482,000
- **Gold Coast Airport Hotel** (Condev) \$362,000
- **Chester & Ella** (Hutchinson Builders) \$340,000
- **The Spot** (Condev) \$314,000
- **Fish Lane** (Shape) \$292,000
- **KOKO** (Morris Property Group) \$214,000
- **Odyssey Aged Care** (Hutchinson Builders) \$160,000

Elements of Bland 2 Brilliant Landscapes' construction include;

- Suspended timber decks;
- Suspended concrete base slabs;
- Supply and installation of high grade natural stone products for all floor and wall solutions;
- Mechanical fixed vertical stone façade cladding;
- Softscape of roads and footpath verges;
- Complete construction of off form concrete insitu walls and seating;
- Source, supply, install and maintain all ex-ground trees, container plants, turf and mulch;
- Installation of greenwalls and sloping gardens;
- Water features;
- All podium and non-podium drainage;
- Source and supply project specific soil blends;
- Gabion walls;
- Architectural designed fencing and screens;
- Supply and placement of all concrete pavements;
- Construction of block retaining walls.

Above all, we at Bland to Brilliant Landscapes believe our business is built upon proven performance and honesty. We take great pride in the skill sets and ability of our staff, from estimators, project managers, tradesman and the future of our company, our apprentices.





KINGSFORD SMITH DRIVE, BRISBANE

Bland **2** Brilliant
LANDSCAPES



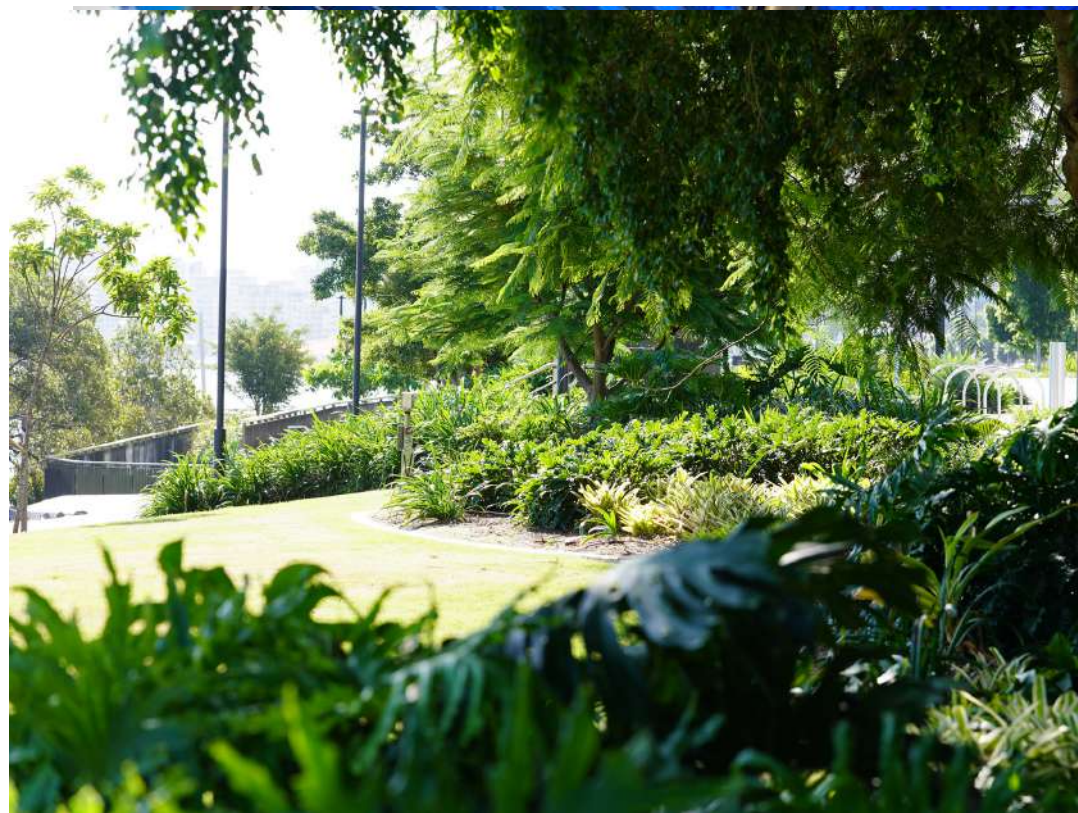
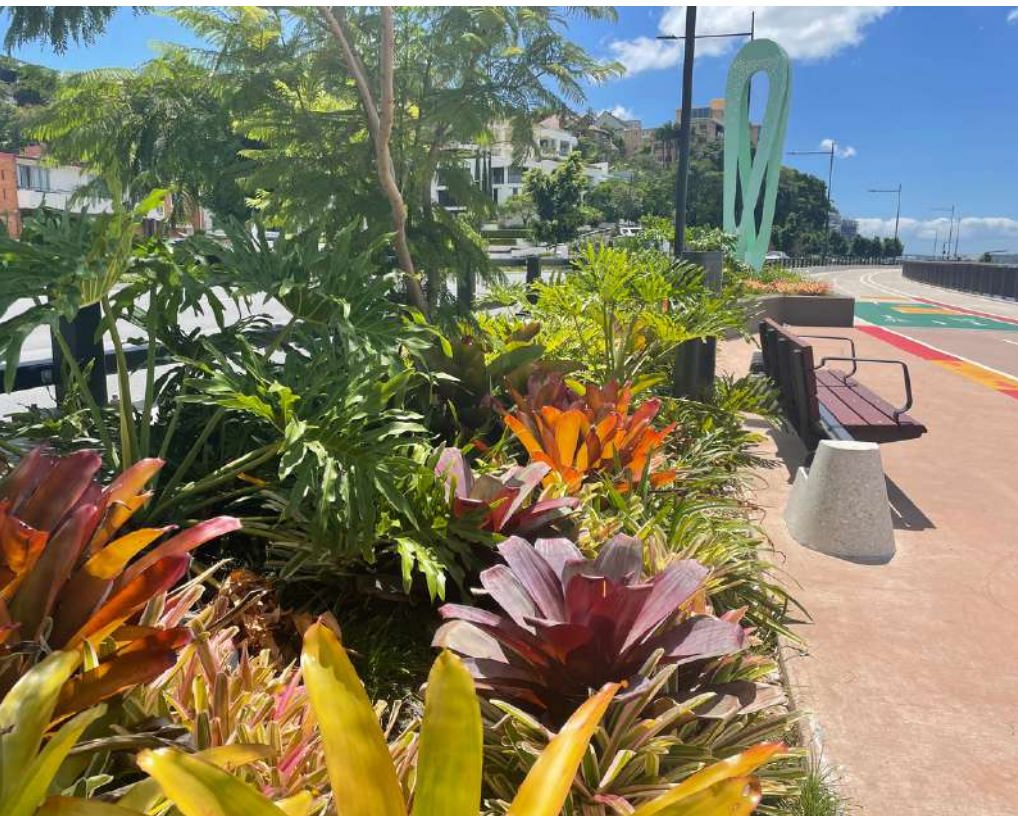
KINGSFORD SMITH DRIVE

BRISBANE

Scope: Both hard and soft landscape elements

Including;

- Turf
- Soil
- Mulch
- Planting
- Irrigation
- Supply and install of granite paving including 2,800 individually cut tapered 60mm thick granite to suit arc
- Concrete base slabs
- Anzac Memorial stone cladding & lettering
- Over 5kms of softscape, including approx 150,000 plants, 400 trees and 20,000 m3 of soil.
- Installation of balustrading



KINGSFORD SMITH DRIVE, BRISBANE

Bland **2** Brilliant
LANDSCAPES



KINGSFORD SMITH DRIVE, BRISBANE

Bland **2** Brilliant
LANDSCAPES



KINGSFORD SMITH DRIVE, BRISBANE



KINGSFORD SMITH DRIVE, BRISBANE

Bland **2** Brilliant
LANDSCAPES



HOTA - HOME OF THE ARTS, BUNDALL



HOTA HOME OF THE ARTS

GOLD COAST

Scope: Softscape and Hardscape elements.

Including;

- Turf
- Plants
- Mulch - Organic and gravels
- Soil
- Irrigation
- Podium gardens
- Bio Basins
- Rootbarrier
- Artwork footings
- Furniture
- Hostile bollards
- Fencing
- Concrete paths 3000m2
- Concrete walls
- Line marking
- Trellis
- Stairs
- Handrails
- Drains



HOTA HOME OF THE ARTS





HOTA - HOME OF THE ARTS, BUNDALL



RIVERLIGHT, HAMILTON

Bland ² Brilliant
LANDSCAPES



RIVERLIGHT HAMILTON

BRISBANE

Scope: Softscape and Hardscape elements

Including;

- Podium drainage
- Soil and plants
- Irrigation
- Timber to pergola structures
- Formed insitu concrete planters
- Concrete BBQ
- Supply & install solid granite blade walls
- Supply/place/finish exposed concrete paths/steps
- Source/supply/install recycled timber beams for seats & totems



RIVERLIGHT, HAMILTON

Bland **2** Brilliant
LANDSCAPES



IRIVERLIGHT, HAMILTON



RIVERLIGHT, HAMILTON



RIVERLIGHT, HAMILTON

Bland **2** Brilliant
LANDSCAPES



RIVERLIGHT, HAMILTON



RIVERLIGHT, HAMILTON

Bland ² Brilliant
LANDSCAPES



480 QUEEN STREET, BRISBANE

Bland **2** Brilliant
LANDSCAPES



480 QUEEN STREET

BRISBANE

Scope: Softscape and Hardscape elements

Including;

- The design/engineer/supply & fix granite vertical facade
- Blockwork
- Concrete
- Podium drainage
- Granite podium paving & cladding (supply & install)
- Podium soil mix supply & install
- Supply & install all plants
- Source/contract grow/supply/install vertical & raking gardens
- Supply/install/engineer timber decks
- Demo and remove existing footpaths, supply/place/finish/hone concrete to footpaths



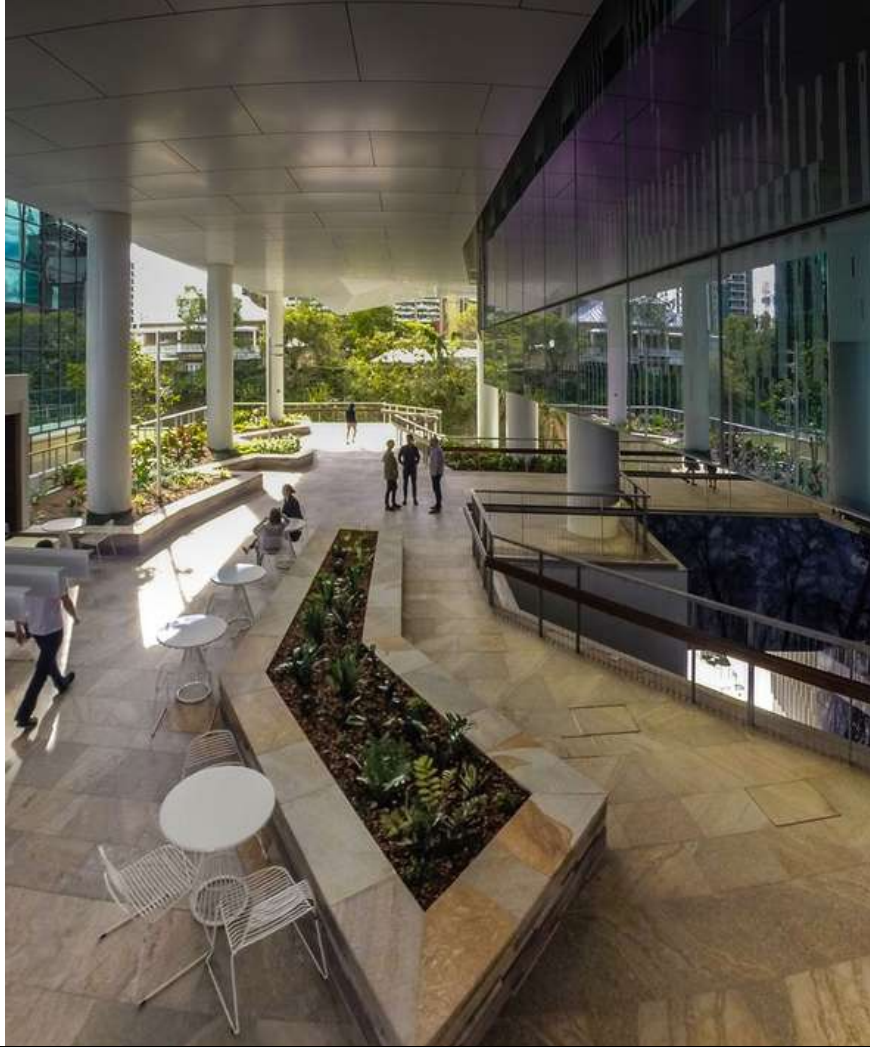
480 QUEEN STREET, BRISBANE

Bland **2** Brilliant
LANDSCAPES



480 QUEEN STREET, BRISBANE

Bland **2** Brilliant
LANDSCAPES



480 QUEEN STREET, BRISBANE

Bland **2** Brilliant
LANDSCAPES



480 QUEEN STREET

480 QUEEN STREET, BRISBANE

Bland **2** Brilliant
LANDSCAPES



FISH LANE, BRISBANE

Bland ² Brilliant
LANDSCAPES



FISH LANE

BRISBANE

Scope: Softscape and Hardscape elements

Including;

- Gardens
- Edging
- Plants
- Irrigation
- Paving



FISH LANE, BRISBANE

Bland **2** Brilliant
LANDSCAPES



FISH LANE, BRISBANE

Bland **2** Brilliant
LANDSCAPES



THE STAR CASINO, GOLD COAST

THE STAR CASINO

GOLD COAST



Garden Lawn Bar

Scope:

- Removal of existing turf lawn (1000m2) and approx 300m3 of soil to suit new levels and subgrade
- Install new power and water services
- Design/engineer/place & finish concrete base slab
- Supply & install granite bollards
- Supply & install rubber softfall / 35mm astro turf

Centenary Park

Scope:

- Subgrade and remove existing pathways, landscaping etc
- Regrade entire park to suit new level / terraces
- Form/place/finish insitu concrete seating walls
- Form/place/finish concrete pathways/ base slab for pavers
- Concrete garden edging
- Supply/install 300m2 granite pavers
- Supply/ plant 6300 140mm/200mm
- Turf/Mulch supply & install approx 6300m2
- Supply & linstall park furniture
- Contract & manage new electrical including all new park lighting, power supply etc

Porte Cochere

Scope:

- Supply/install granite paving & cladding to entrance of Casino



BREEZE APARTMENTS, WEST END



BREEZE APARTMENTS

WEST END

Scope: Softscape and Hardscape elements

Including;

- All hard and softscape elements
- Exposed concrete finish ground level
- Street Furniture
- Podium drainage
- Irrigation
- Podium soil mixes
- Level 8 composite timber decking, including support structure
- Bondek & honed coloured concrete
- Concrete stairs
- Astro Turf on rubber softfall
- Supply/install BBQ's
- All plants and mulch



PARKLANDS COMMONWEALTH GAMES VILLAGE, GOLD COAST



COMMONWEALTH GAMES VILLAGE

GOLD COAST

Scope: Softscape and Hardscape elements

Including;

- Complete hard and softscape of the entire Games Village
- Blockwork, Bondek, Voidformers
- Timber decks
- Powder Coated steel arbours
- Insitu formed concrete seating
- Low level aluminium balustrades, and all fencing
- Gabion Walls up to 5m high
- Concrete Pathways
- Supply & Install 1000m² granite pavers on jacks
- Supply & install 10000m³ of soil
- including conveyors, all machines
- Subsoil drainage
- Source/supply/plant over 100,000 plants
- Supply/install mulch & turf
- Engineering of all hardscape elements



PARKLANDS COMMONWEALTH GAMES VILLAGE, GOLD COAST

Bland **2** Brilliant
LANDSCAPES



PARKLANDS COMMONWEALTH GAMES VILLAGE, GOLD COAST



BRISBANE INTERNATIONAL CRUISE TERMINAL (BICT), BRISBANE



BRISBANE INTERNATIONAL CRUISE TERMINAL

BRISBANE

Scope: Softscape and Hardscape elements

Including;

- Turf
- Gardens
- Timber Edging
- Plants
- Hydroseeding
- Artificial Turf
- Coloured concrete paths
- Concrete Walls and seat walls
- Furniture



BRISBANE INTERNATIONAL CRUISE TERMINAL (BICT), BRISBANE

Bland **2** Brilliant
LANDSCAPES



BRISBANE INTERNATIONAL CRUISE TERMINAL (BICT), BRISBANE



ADELAIDE RIVERBANK PEDESTRIAN BRIDGE SOUTH AUSTRALIA



ADELAIDE RIVERWALK BRIDGE

ADELAIDE

Scope: Softscape and Hardscape elements

Including;

- Source granite to match existing
- Process all granite including water-feature elements
- Design, manufacture vacuum lifting equipment to lift granite stone 200Kgs to 2000kgs
- Waterproof/test all podium slabs
- Place and finish all concrete podium slabs to allow for installation of 40mm granite pavers
- Supply & lay over 3500m² of granite pavers, treads & risers, plus installation of feature stone through out water-feature



ADELAIDE RIVERBANK PEDESTRIAN BRIDGE SOUTH AUSTRALIA



THE HAMILTON BRISBANE

Scope: Softscape and Hardscape elements

Including;

- Blockwork, Bondek, Voidformers, concrete base slabs
- Supply/lay granite pavers
- Form/placed & finish off-form insitu concrete planter walls
- Podium drainage/podium soils/mulches/ turf/plants
- Asphalt driveway
- Furniture items
- Irrigation



THE HAMILTON ON REMORA ROAD, BRISBANE



QLD UNIVERSITY OF TECHNOLOGY

BRISBANE

Scope: Softscape and Hardscape elements

Including;

- All demolition / removal of existing concrete paths, main driveway including around and within Old Government House Heritage Building
- Supply/Place/Finish all concrete base slabs to suit 40mm paving. Approx 3000m²
- Supply and lay all granite paving approx 3000m²
- Design, Engineer, manufacture, supply and install timber decking including galv structure





RYDGES GC AIRPORT HOTEL

GOLD COAST

Scope: Softscape and Hardscape elements

Including;

- Irrigation
- Soil
- Mulch
- Plants
- Turf
- Drainage cell
- Decorative gravel
- Artificial turf
- Metal edging
- Timber blades to wall
- Artificial Turf



RYDGES GOLD COAST AIRPORT HOTEL, GOLD COAST



RYDGES GOLD COAST AIRPORT HOTEL, GOLD COAST





THE BOATYARD

BRISBANE

Scope: Softscape and Hardscape elements.

Including;

- Drainage cell
- Geofabric
- Soil
- Irrigation
- Turf
- Edging
- Granite paving
- Trellis
- Honed concrete entry steps and landings







ANZAC SQUARE, BRISBANE

Bland **2** Brilliant
LANDSCAPES



ANZAC SQUARE

BRISBANE

Scope: Softscape and Hardscape elements

Including;

- Supply and lay all granite pavers
- Including arc pavers
- Custom granite seats
- Stairs
- Tactiles



29 Hutchinson Street, Burleigh Heads
Queensland, Australia, 4220

Phone: (07) 5536 8007

Email: carl@bland2brilliant.com.au

www.bland2brilliant.com.au

